


## LISTING DETAIL



Click on Photo to Enlarge

MLS # **19001710**  
 Status **Active**  
 Area **111**  
 Price **\$284,900**  
 Address **1 Putter Cove**  
 Subdivision **River Plantation**  
 City **Mayflower**  
 County **Faulkner**  
 Zip **72106**

Mapping Link 

**Virtual Tour:** Virtual Tour

**Add. Unbranded Video:** Video

### GENERAL

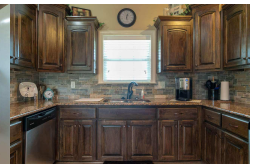
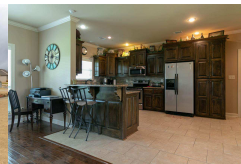
Beds	<b>4</b>	Approx Acreage	<b>0.50</b>	Directions	<b>Hwy 365 South through Mayflower. Turn right at River Plantation. House is on corner of Plantation and Putter Cove.</b>
Full Baths	<b>3</b>	Elm School			
Half Baths	<b>0</b>	Mid School			
Apx SQFT	<b>2589</b>	Jr High			
SOURCE OF SF	<b>Appraisal</b>	High Sch			
Apx YRB	<b>2013</b>	Days On Market	<b>102</b>		
Apx Lot Sz	<b>.50</b>				

### FEATURES

Owner/Agent	<b>Listing Agent/Broker is neither owner nor of any relation to owner</b>	LOT	<b>Level, Corner Lot, In Subdivision, River/Lake Area</b>
Disclosure		INTERIORS	<b>Washer Connection, Dryer Connection-Electric, Walk-In Closet(s), Built-Ins, Ceiling Fan(s), Walk-in Shower, Breakfast Bar, Wired for Highspeed Inter</b>
Bedrooms	<b>Master Bedroom/Main Lv, Guest Bedroom/Main Lv, 2 Bedrooms Same Level</b>	OTHER ROOMS	<b>Formal Living Room, Great Room, Bonus Room, Laundry</b>
Energy Features	<b>Insulated Windows, Insulated Doors</b>	POSSESSION	<b>At Closing</b>
Dining	<b>Separate Dining Room, Breakfast Bar</b>	RESTRICTIONS	<b>Covenants</b>
EXTERIOR	<b>Brick, Metal/Vinyl Siding</b>	ROAD SURFACE	<b>Paved</b>
EXT. FEATURES	<b>Porch, Storm Cellar</b>	ROOF	<b>Composition, Architectural Shingle</b>
FIREPLACE	<b>Gas Logs Present</b>	STORIES	<b>Two Story</b>
FLOORS	<b>Carpet, Wood, Tile</b>	STYLE	<b>Traditional</b>
FOUNDATION	<b>Slab</b>	UTILITIES	<b>Septic, Water-Public, Elec-Municipal (+Entergy), TV -Satellite Dish</b>
PARKING	<b>Garage, Parking Pads, Two Car, Auto Door Opener, Side Entry</b>	WALLS/ CEILINGS	<b>Sheet Rock, Sheet Rock Ceiling</b>
HEAT & AIR	<b>Central Cool-Electric, Central Heat-Electric, Zoned Units</b>	WARRANTY	<b>3rd Party Home Warranty</b>

### REMARKS

Want to live just outside the city?? Come tour this 4 bedroom 3 baths, 2589 sq ft home in The River Plantation! Features include, storm shelter, granite counter tops, hardwood, large back porch, built in cabinets upstairs and plenty of storage. All on a corner lot. Call NOW to bet the first in line to tour this home!



**This property brought to you courtesy of: ERA TEAM Real Estate**

THIS INFORMATION IS DEEMED RELIABLE, BUT NOT GUARANTEED, AND IS PROVIDED EXCLUSIVELY FOR CONSUMER'S PERSONAL, NON-COMMERCIAL USE AND MAY NOT BE USED FOR ANY PURPOSE OTHER THAN TO IDENTIFY PROSPECTIVE PROPERTIES CONSUMERS MAY BE INTERESTED IN PURCHASING. UNDER NO CIRCUMSTANCES SHOULD THE INFORMATION CONTAINED HEREIN BE RELIED UPON BY ANY PERSON IN MAKING A PURCHASE DECISION, INCLUDING BUT NOT LIMITED TO, INFORMATION PRECEDED WITH THE WORD OR ABBREVIATION DENOTING APPROXIMATE. COPYRIGHT 2019 COOPERATIVE ARKANSAS REALTORS® MULTIPLE LISTING SERVICES INC.